

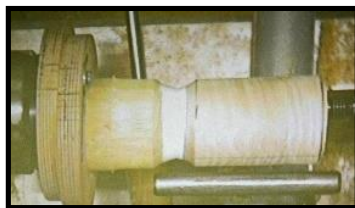
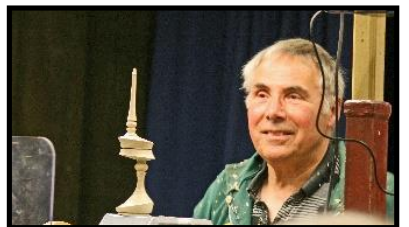
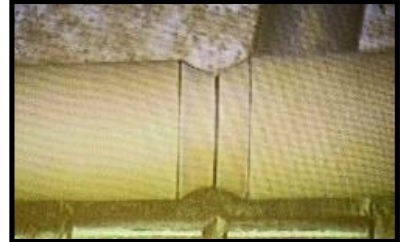
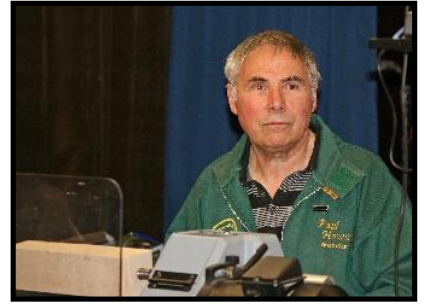
June 2015 Meeting - Paul Howard

Paul stated that he was going to make an off-centre finial box from a design in Chris Stott's book "Turned Boxes: 50 designs". He was going to use his homemade plywood eccentric chuck (which he sells in kit form).

He started by roughing the square blank to the round using callipers to ensure the correct dimension and then marked lines across each end (passing through the centre point). He then marked up each end so that he could get the correct offsets. With the piece mounted centrally a spigot was turned on each end and the blank parted through the centre.

One part (the base of the box) was mounted in the chuck and the face cleaned up. Using callipers measurements were taken direct from the diagram and the various parts of the box base were marked out. A spigot was cut using a parting tool and the box hollowed out to depth, taking into account the finished wall thickness. This was then removed from the chuck and replaced by the top part of the box.

The top of the box was marked out as before and hollowed out to depth but a recess was formed to fit over the spigot formed on the other half of the box. The bottom of the box was fitted into the top and the tailstock brought up to hold it in place. The position of the coves were marked and then turned. The chuck was then replaced by Paul's Plywood eccentric chuck and a sacrificial piece..



A recess was cut into the end of the sacrificial piece to take the spigot on the top of the bottom part of the box. The offset in the chuck was set and the base of the box fitted. Plastic tape was used to hold the piece in place and to stop them slipping. The tailstock was brought up to support the piece. He started to form the stem using a bowl gouge (sturdier than a spindle gouge when alternately turning air then wood). Once the stem was round Paul shaped the underside of the box portion and formed a bead at the junction between stem and box. He continued to shape the stem, narrowing it and blending into the foot to which he turned a half cove. The stem was sanded.

he off-centre chuck was reset to centre and the original spigot on the base was turned away. The top section of the box was mounted by turning a spigot on the sacrificial piece so that the recess in the box could be a jam fit over it. Again PVC tape was used to hold it in place. The chuck was set to the offset and the tailstock brought up for support. With gentle cuts Paul shaped the top of the box portion and reduced the finial part to the round. He then refined the shape of the finial and blended it in to the box. He then carefully sanded the finial so as not to destroy the detail.

Finally the two halves were brought together and the next photo shows Paul and the finished turned box.

Paul had brought along a selection of his turnings and also some of the jigs that he makes as shown in the following photos.



It was obvious from the way Paul turned (with callipers in hand) that he was trained as an engineer and he brought that training to an excellent demonstration.